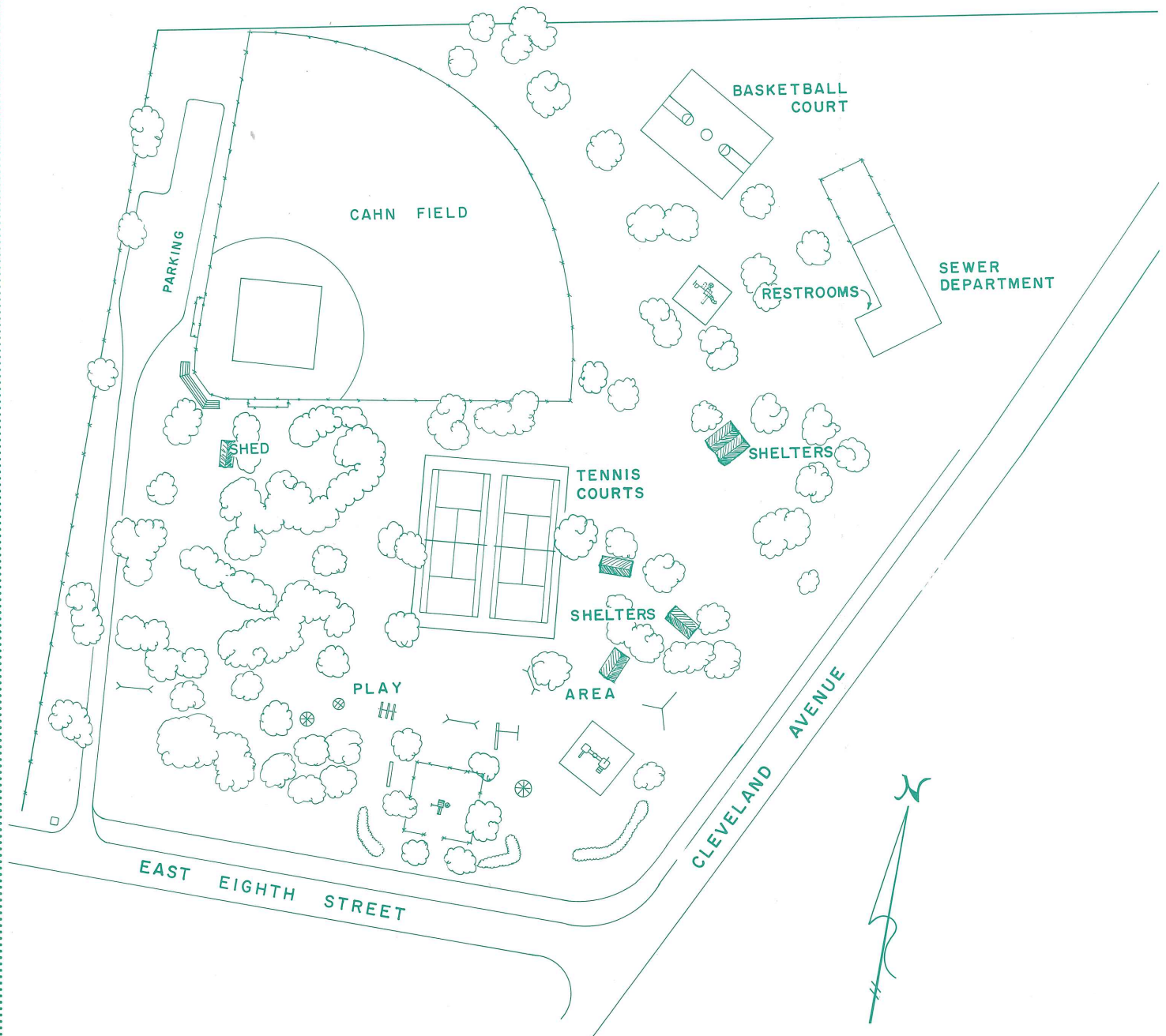


CAHN GROVE PARK



CAHN GROVE PARK

DIRECTIONS TO CAHN GROVE PARK

From the corner of Claremont Avenue and Main Street, travel east on Main Street to Miller Street. Go left on Miller Street to Cleveland Avenue, right on Cleveland Avenue, about 3/4 mile to park on west side of Cleveland Avenue.

BALL DIAMONDS

Cahn Grove Park has one, lighted, fastpitch ball diamond with a seating

capacity of 160. This field is used for league and tournament play.

TENNIS COURTS

Two regulation-size courts are available and are lighted for adult night-time play.

BASKETBALL COURT

The blacktop court has six baskets and is available for individual or group play.

PICNIC AREAS

Picnic tables and charcoal grills are pro-

vided for the public. Five picnic shelters are available on a first-come basis.

PLAYGROUND EQUIPMENT

A wide variety of playground equipment fills this park to let your child's imagination run wild! From slides to merry-go-rounds, wooden climbing structures, and a special fenced area with play equipment for toddlers.

RESTROOM FACILITIES

A paved walkway leads to the restroom located in the back of the City of Ashland Sewer Department's building on Cleveland Avenue and is open during the summer months.