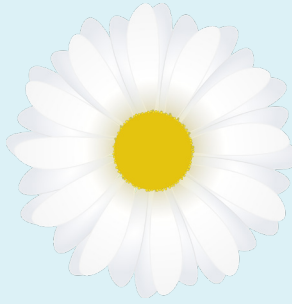


# SPRING CLEANUP



## Let's Clean!

It's time to join your neighbors in cleaning out your homes, garages, and yards. Unwanted items will be picked up during our annual event. Here is how to properly prepare and participate in the City of Ashland Spring Cleanup!

---

**Sanitation Department**  
**419-289-9791**

**City Arborist**  
**419-289-8239**

---

Spring Cleanup pickup dates and routes can be seen on the other side of this sheet and are available at [ashland-ohio.com](http://ashland-ohio.com).

Place your items along the curb no earlier than one week before your scheduled time.

### How to prepare for Spring Cleanup:

- Separate different categories of items (metals, cardboard, furniture, recyclables, etc.)
- Break down large items to lengths of no longer than 4 feet (construction materials, carpet, etc.)
- Mark containers that you do not want taken
- Place normal, weekly trash and recyclable items separate from Spring Cleanup items
- Cover all upholstered furniture in plastic wrapping

### Additional fees for:

- Placing your items out earlier than one week before your designated pickup time
- Having more than 3 cubic yards of material (length of a pickup truck bed)
- Placing items on the curb after your designated pickup time

**Any charged amounts will appear on your City of Ashland utility bill**

### Contact the Arborist for help with:

- Brush chipping

### Items we accept:

- |                               |   |
|-------------------------------|---|
| • Microwaves                  | • Carpet (4 ft. sections)                           |
| • Dishwashers                 | • Furniture/Mattresses                              |
| • Washers/Dryers              | • Drained engines & transmissions (remove oil pans) |
| • Furnaces                    | • Drained mowers                                    |
| • Hot water heaters           | • Other assorted items                              |
| • Paint cans with dried paint |   |

### Items we do NOT accept:

- Tires
- Gas tanks
- Chemicals
- Wet paint
- Unknown liquids
- Yard waste\*
- Rocks or concrete materials
- Steel drums
- Asbestos materials/items containing asbestos
- Electronics: TV's, computers, copiers\*
- Any unit containing Freon: refrigerators, freezers, AC units\*

**\*Contact the Sanitation Department for help with these items**